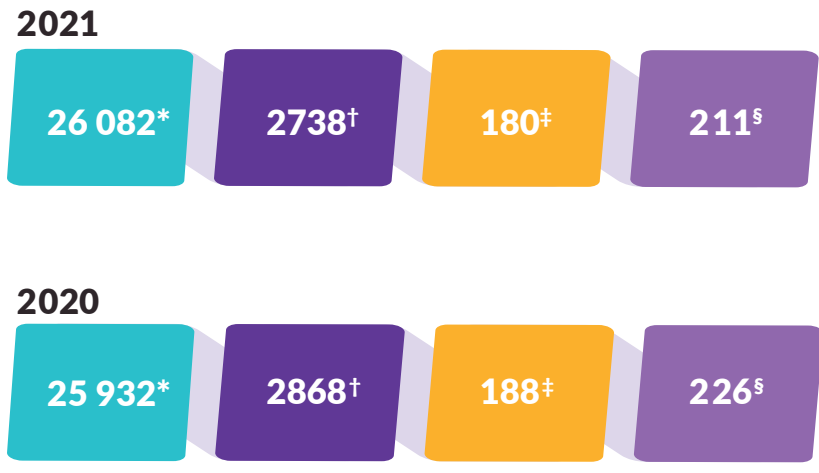


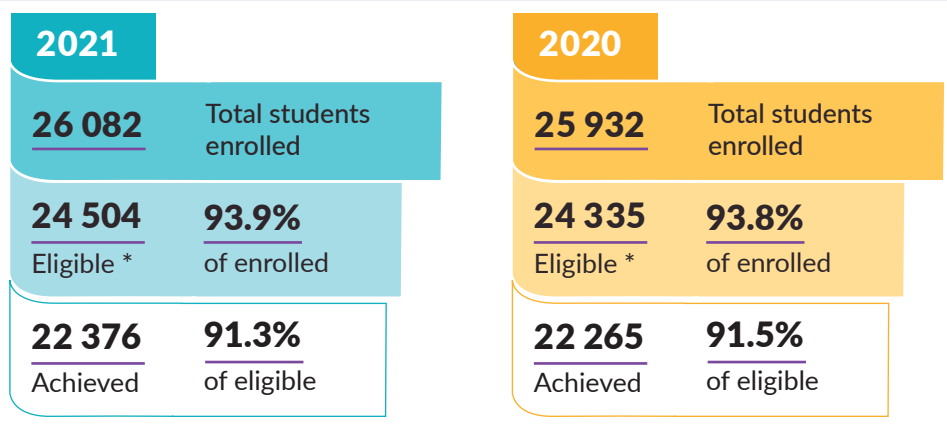
Year 12 Population



- * Total number of students enrolled and working towards the WACE
- † Number of students in apprenticeships, traineeships, employment and/or training. Not enrolled in schools.
- ‡ Students repeating or re-entering Year 12
- § Mature-age Year 12 students

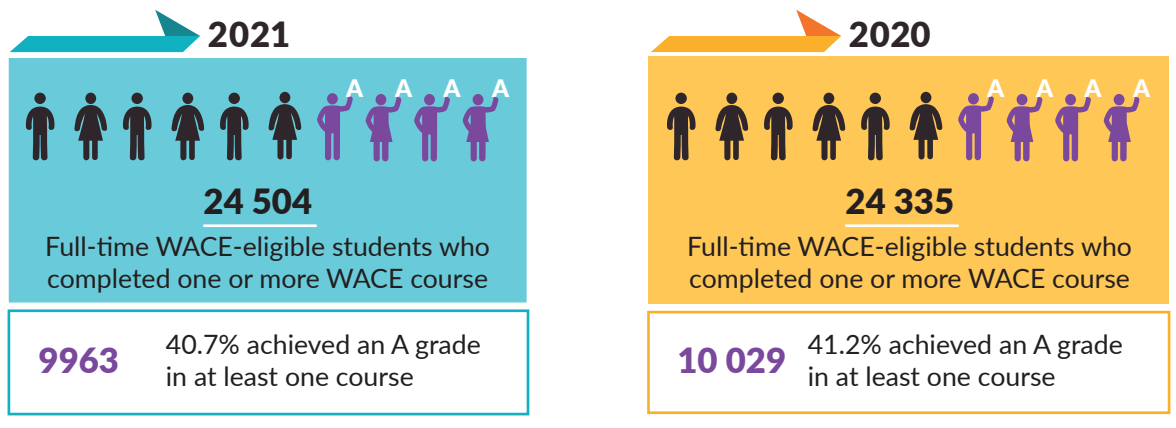
* These students have completed at least one course unit, one unit of competency or one endorsed program.

Secondary WACE Achievement

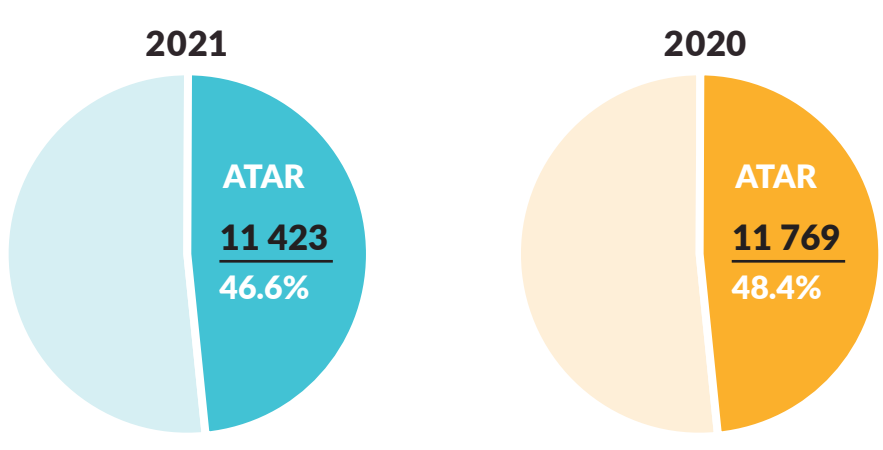


* These full-time students have completed at least eight course units, or equivalent, in Year 12 and are eligible to achieve a WACE.

WACE Courses

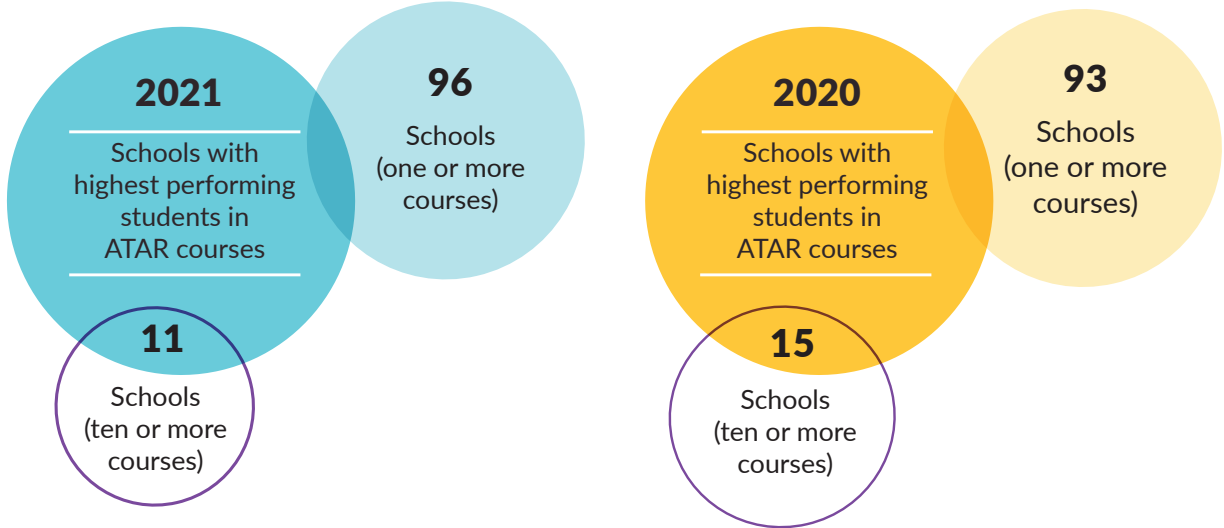


ATAR Courses

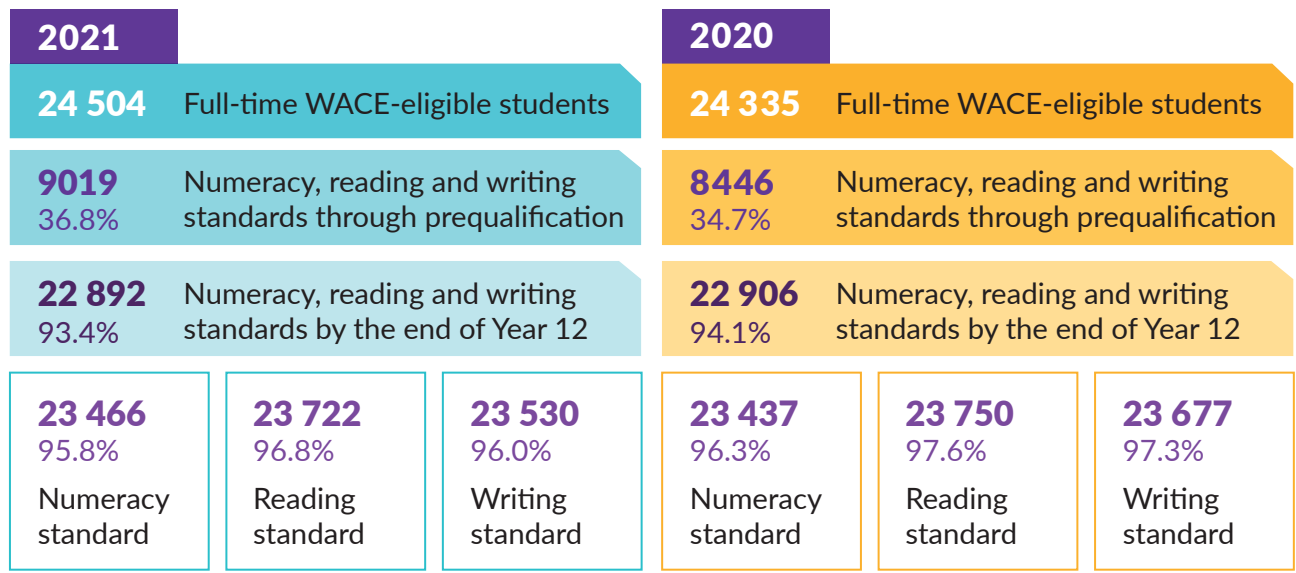


Full-time WACE-eligible Year 12 students who sat four or more ATAR course examinations.

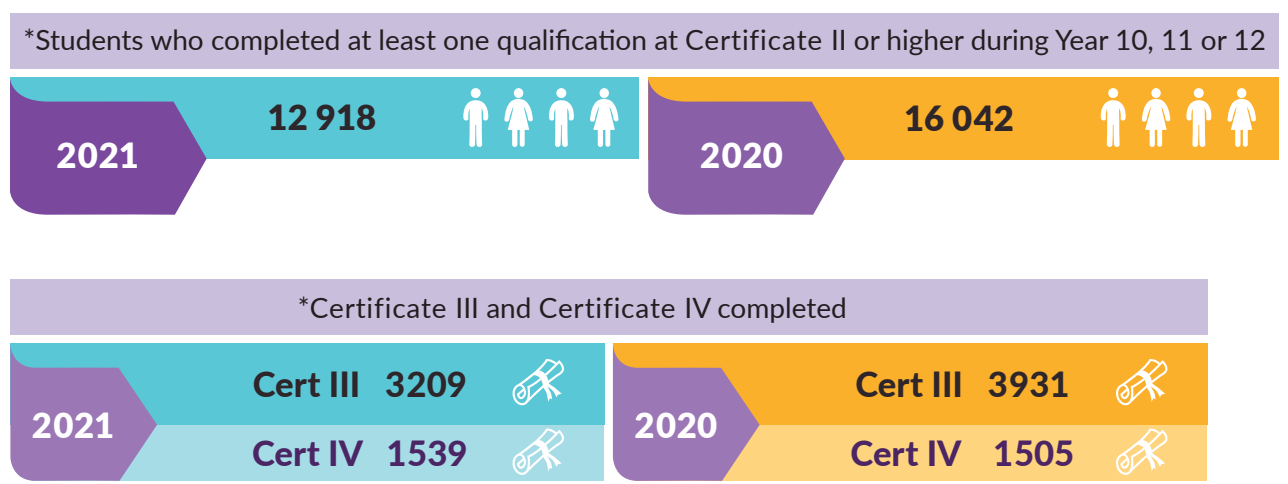
Schools with Highest Performing Year 12 ATAR Students



Demonstrating Literacy and Numeracy Standards

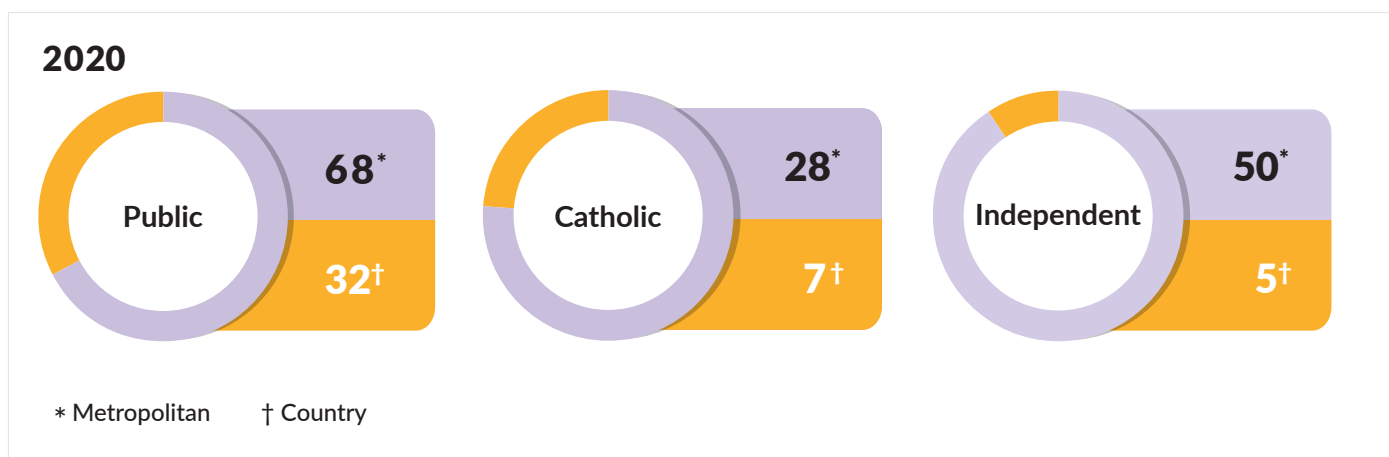
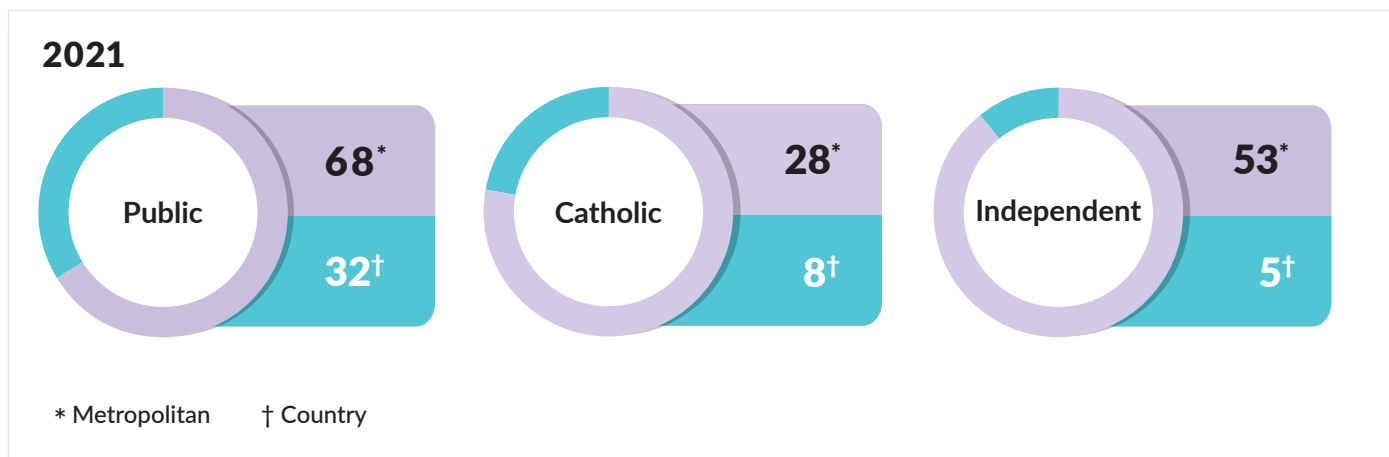


VET Qualifications Completed by Year 12 Students

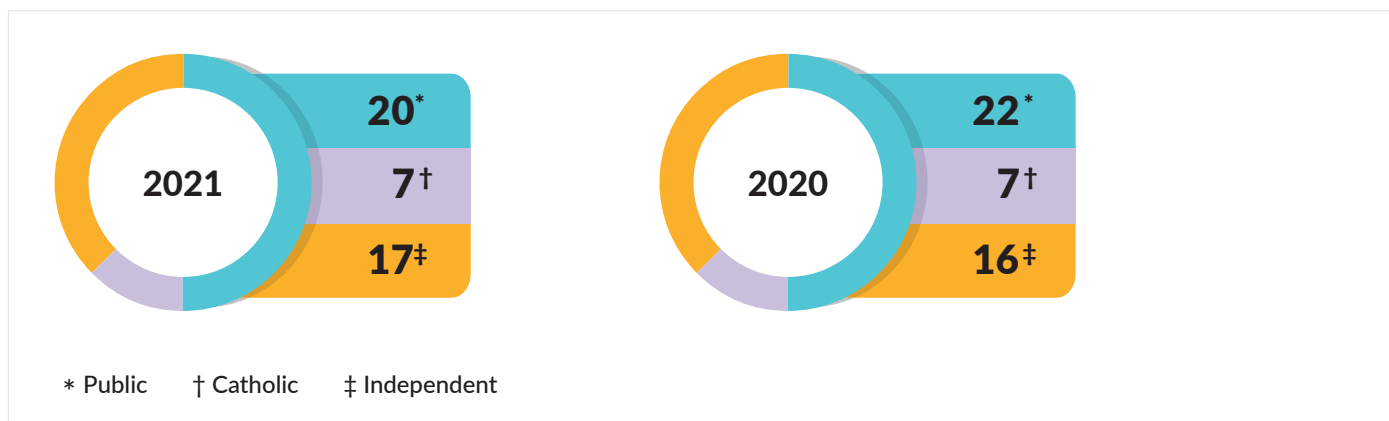


* VET qualifications, reported by schools, are not awarded by the School Curriculum and Standards Authority and need to be verified by sighting the relevant certificate.

The following table shows the number of schools for each school system/sector and metropolitan and country region which had an enrolment of 20 or more full-time WACE-eligible Year 12 students.



Schools that had fewer than 20 full-time WACE-eligible Year 12 students



Cyril Jackson Senior Campus, North Lake Senior Campus, international schools, School of Isolated and Distance Education and primary schools are not included in the tables above.